



spraymastertech.com

PRODUCT: \_\_\_\_\_

SKU NUMBER: \_\_\_\_\_

QUANTITY: \_\_\_\_\_



300-1698 Surface Mount

## FEATURES

- Stainless Steel Remote Station
- Shut-off Quick Connect
- Top or Rear Entry
- Stainless Steel Tubing Supply
- Bottom Port
- Non-Locking
- Electronic Controls

SMT - Surface Mount Remote

**Spray Master Technologies®**

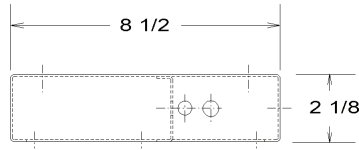
**TOLL FREE: 800-548-3373**

115 E. Linden • Rogers, Arkansas 72756 USA  
(479) 636-5776 • Fax: (479) 636-3245

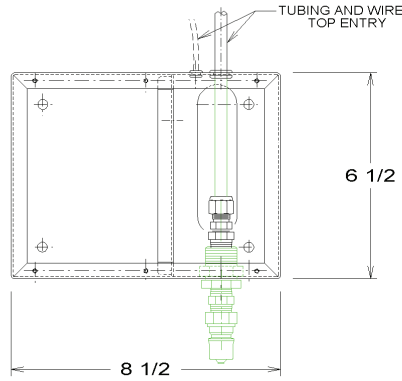
[www.spraymastertech.com](http://www.spraymastertech.com)



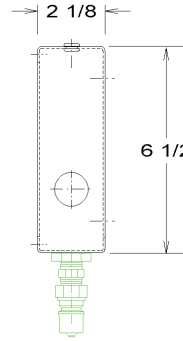
SMT - Surface Mount Remote



PLAN VIEW

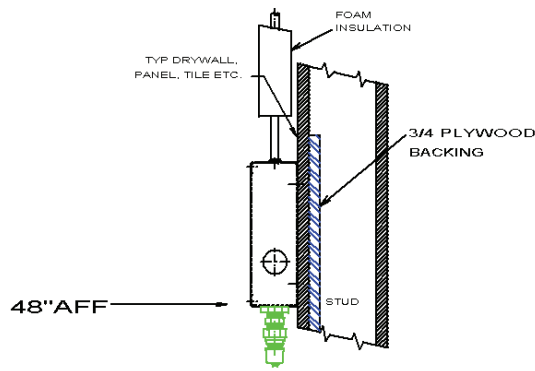


FRONT VIEW

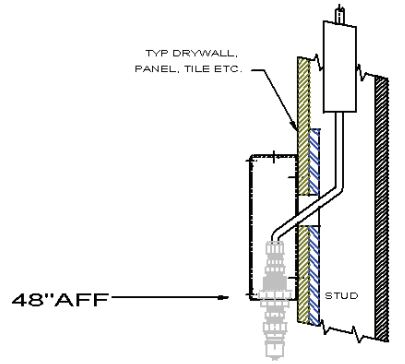


SIDE VIEW

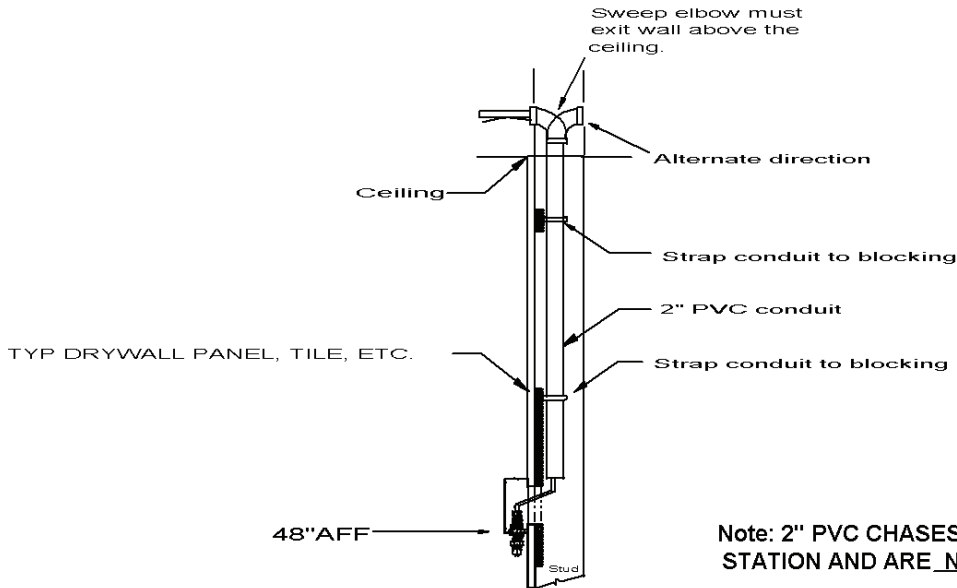
CS- 1698 A



SIDE VIEW  
(Surface Wall- Tubing)



SIDE VIEW  
(IN-WALL TUBING)

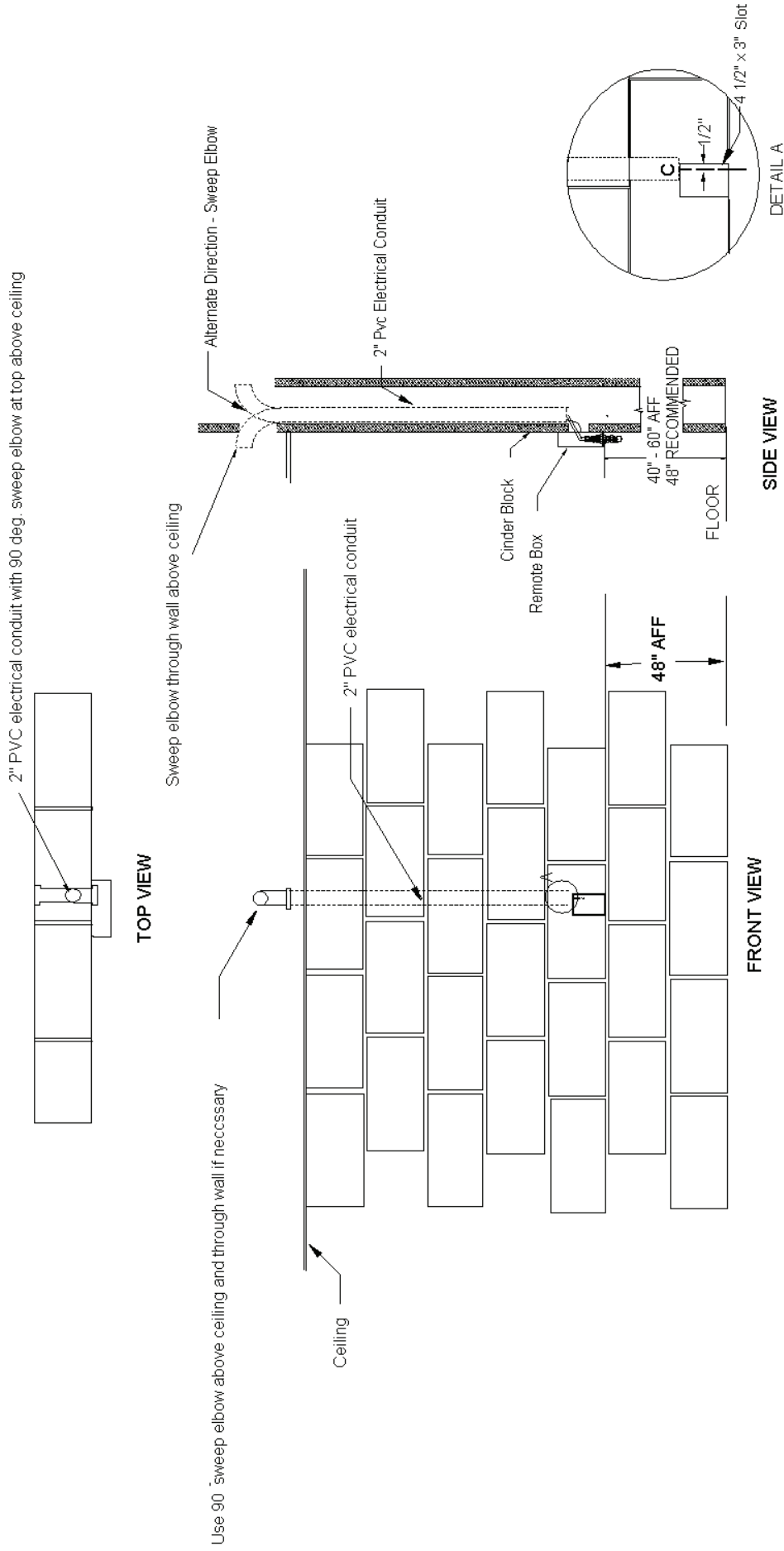


Side View  
(In Wall Tubing)

**Note: 2" PVC CHASES ARE REQUIRED FOR EACH REMOTE STATION AND ARE NOT QUOTED OR SUPPLIED BY SMT**

CS- 1698 B

# SMT - Surface Mount Remote



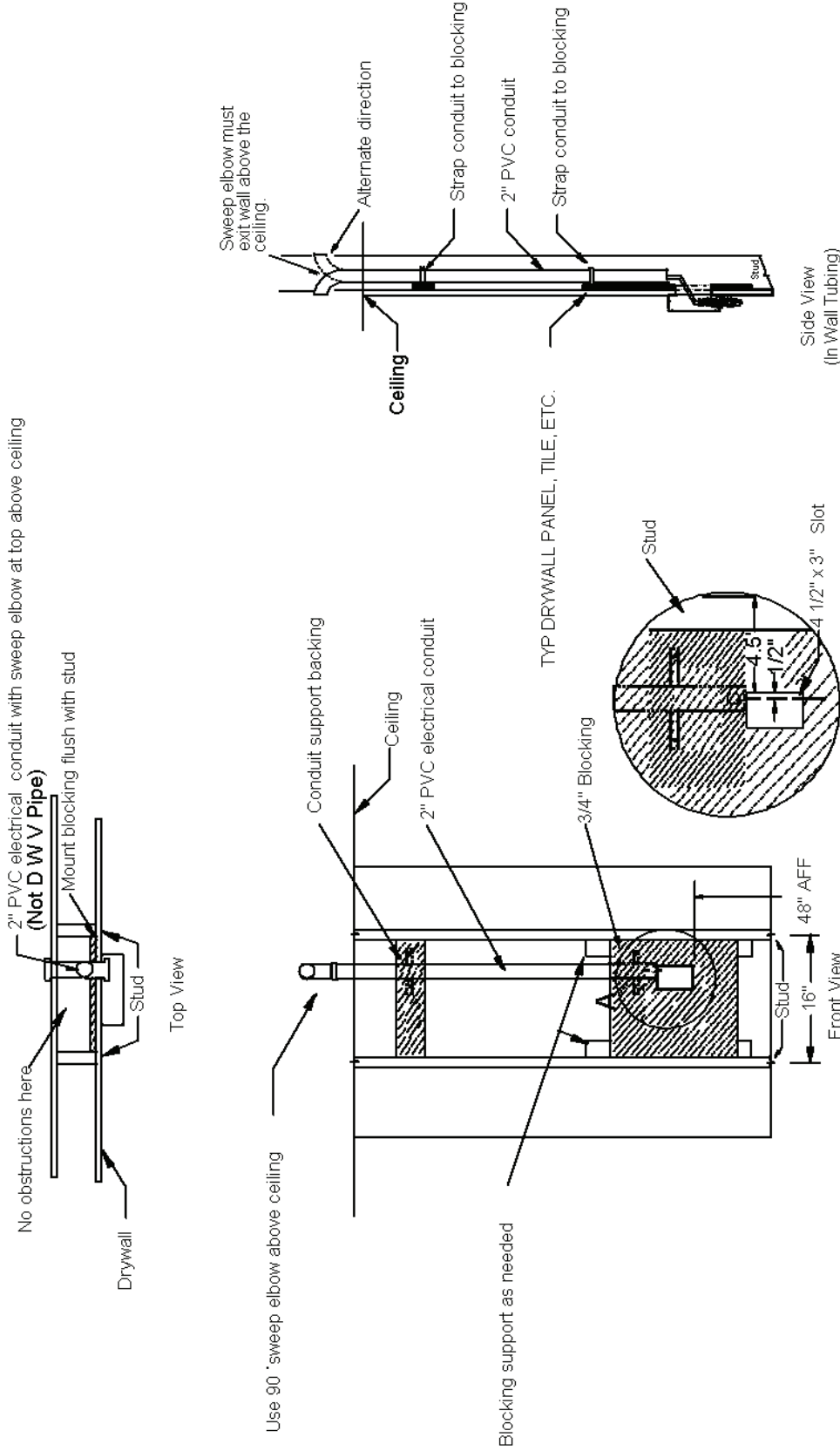
**Note: 2" PVC CHASES ARE REQUIRED FOR EACH REMOTE STATION AND ARE NOT QUOTED OR SUPPLIED BY SMT**

**NOTES:**

- 1.-Cut or block bottom of 4 1/2" x 3" opening 48" above finished floor
- 2.-Ensure there are no obstructions
- 3.-Secure conduit chase in wall centered at 1/2" from right side of 4 1/2" x 3" opening at front inside of Masonry Block
- 4.-Do not cover 4 1/2" x 3" opening.
- 5.-Remote box will mount on surface of finished wall.
- 6.-Call for Technical Support (800) 548-3373
- 7.-Special Provision required for furrow out masonry wall.

**CHASE INSTALLATION  
MASONRY WALL  
SURFACE REMOTE  
300-2070**

# SMT - Surface Mount Remote



**Note: 2" PVC CHASES & BACKING ARE REQUIRED FOR EACH REMOTE STATION AND ARE NOT QUOTED OR SUPPLIED BY SMT**

**Blocking & Chase Installation  
Surface Mount Remote  
ACD-300-2067**