



spraymastertech.com



Includes hose reel

300-5025

2.2 gpm / 8.3 lpm @ 1100 psi / 76 bars, 115V

2.2 gpm / 8.3 lpm @ 1000 psi / 69 bars, 208V

2.2 gpm / 8.3 lpm @ 1100 psi / 76 bars, 230V

2.9 gpm / 11 lpm @ 850 psi / 59 bars, 115V

2.9 gpm / 11 lpm @ 800 psi / 55 bars, 208V

2.9 gpm / 11 lpm @ 850 psi / 59 bars, 230V

PRODUCT: _____

SKU NUMBER: _____

QUANTITY: _____

FEATURES

- 2 hp Motor TEFC, 1725 rpm, 1 Phase Draws 15A
- 3 Cylinder CAT® Super Flow Plunger Pump
- Quick Coupler Set (Connects Hose to Unit)
- Quick Coupler Set (Connects Gun to Hose)
- 50 ft / 15.3 m High Pressure Hose (Steel Braided)
- SMT-200RWC Manual Rewind Hose
- Adjustable Chemical Injector
- One 1gal/3.8L Chemical Basket
- Pressure Gauge, 2000 psi / 138 bars, Liquid Filled
- Stainless Steel Cover and Frame
- Stainless Steel Wall Mount Brackets with Gun Hanger
- 6 ft/2m - Water Inlet Supply Hose
- 4 ft/1.3m Cord with GFC
- Maintenance Kit: Water Filter, Replacement Filter and Two Hydraulic Oils
- ETL-CSA Listed to UL 1776
- Shipping Weight: 239 lb / 104.3 kg

SMT - 1100W Wall Mount System

Spray Master Technologies®

TOLL FREE: 800-548-3373

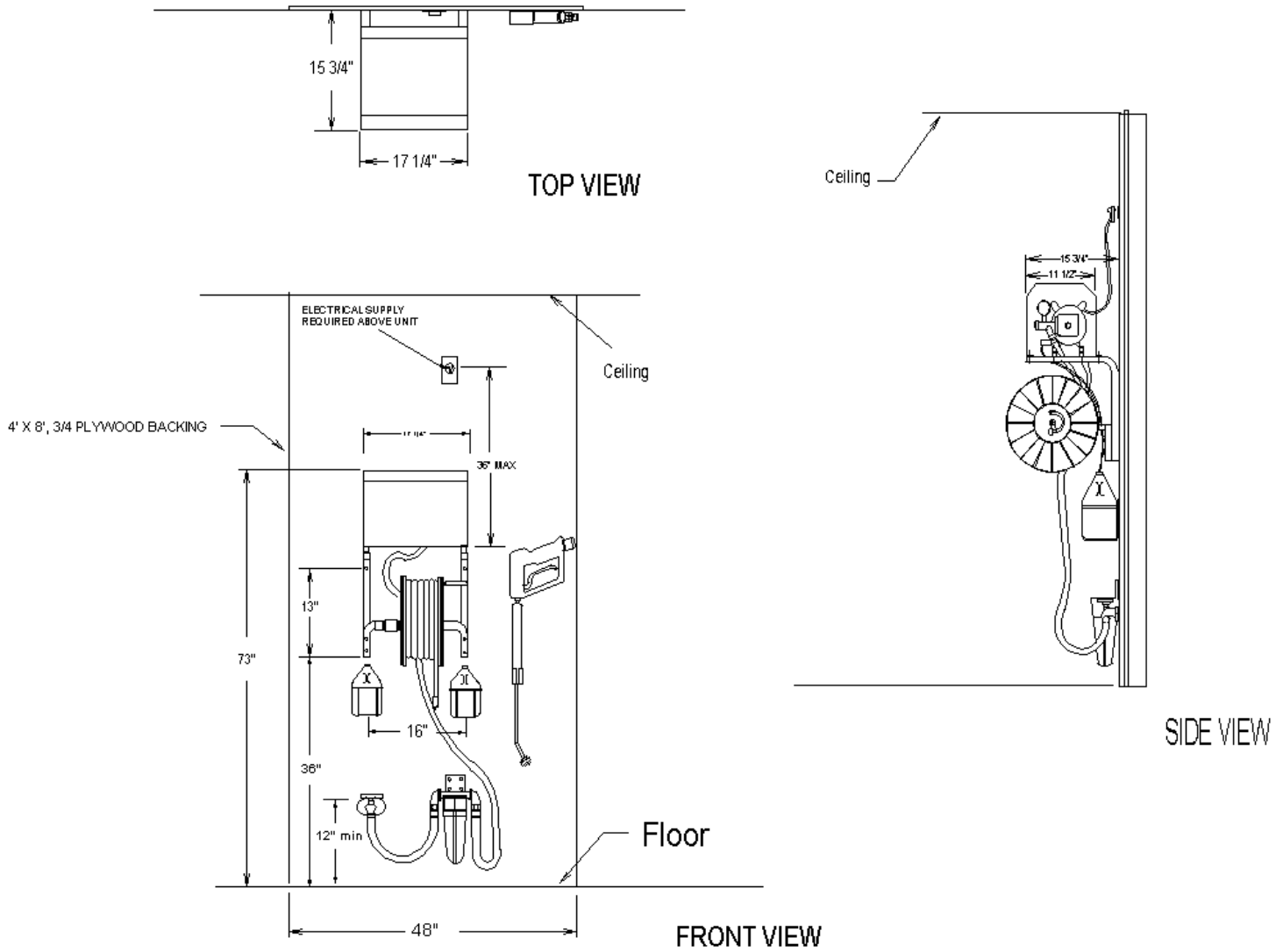
115 E. Linden • Rogers, Arkansas 72756 USA

(479) 636-5776 • Fax: (479) 636-3245

www.spraymastertech.com



SMT - 1100W Wall Mount System



Equipment Specifications

Clearances

Left side	12"/30 cm
Right side	12"/30 cm
Overhead	14"/35 cm
Floor	36"/91 cm
Front	36"/91 cm

Plumbing

3/4"/2cm Hose Bib with 5gpm/.14Lpm @ 30psi/20.6bars. 120°F/49°C

Electrical

115V, 20A dedicated circuit or 208-230V, 15A GFCI.

Installation Specifications

Electrical:

One (1) 115V, 60hz, single phase, 20A, 'Dedicated Circuit' with standard receptacle. NOTE: For 208V or 230V units a 15A wall receptacle is required.

Water:

One (1) warm water outlet 120°F/49°C MAX with standard 3/4"/1.9cm hose bib with shut-off valve. A pressure gauge in the water line can be helpful although it is not mandatory. A minimum of 5 gal. / 19L per minute and a line pressure not less than 30psi/20.6bars, is required.

Location:

Heated utility room or closet with ventilation. Minimum 14in/.35m clearance above unit required to remove cover. The cover must be removed for servicing the unit. The unit can be serviced without removing it from the wall.

General Recommendations:

Floor drains are essential in new facilities to receive the greatest utilization and maximum efficiency of your SPRAY MASTER Pressure Washer. Floor materials and wall coverings which can be cleaned with pressurized water are desirable. Locate electrical outlets above washing areas.