

PRODUCT: _____

SKU NUMBER: _____

QUANTITY: _____



FEATURES

- Works with SMT Low Pressure Systems
- Industrial Central Hi-Flow fluid extractor
- Automatic dust filtration by 2 low flow cold water jets
- Automatic self-flushing drain
- 2, Industrial 120v motors
- 180 H2O (Inches)
- 120 ft 3/min Air Flow
- 706 Air Watts
- 6 gallon capacity with automatic flushing for continuous use
- Weight (no water): 80 Lbs / 36 kg

SMT - VacMaster[®] System

300-7310: VacMaster[®] System

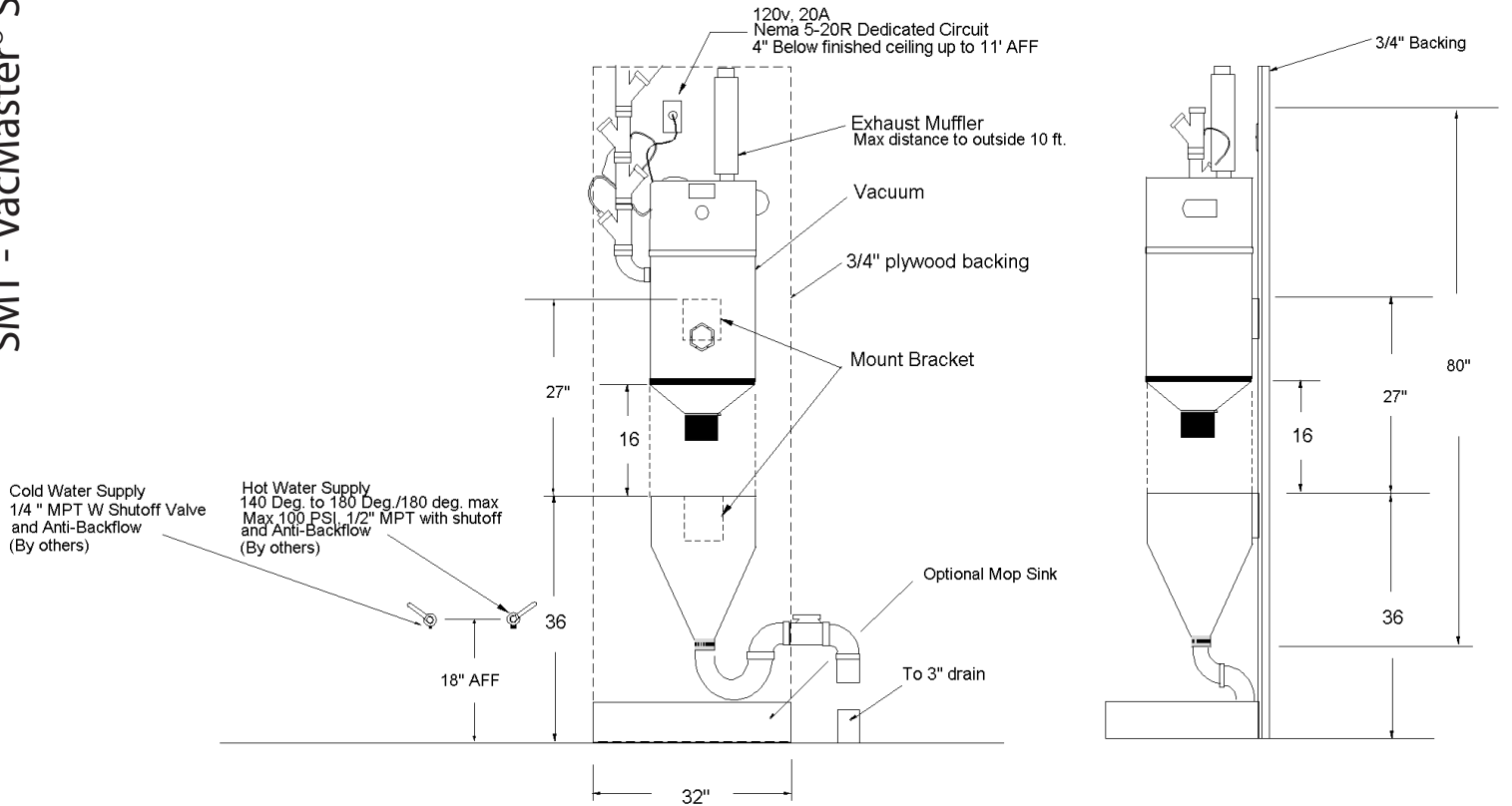
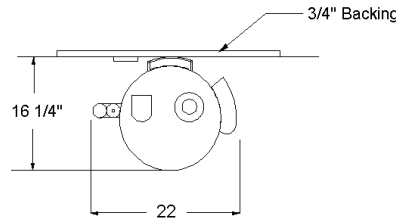


TOLL FREE: 800-548-3373

115 E. Linden • Rogers, Arkansas 72756 USA
(479) 636-5776 • Fax: (479) 636-3245

www.spraymastertech.com

SMT - VacMaster® System



PRODUCT SPECIFICATIONS

Weight

Dry	80 Lbs / 36 kg
Wet	
(with max. water capacity - 6 gal) ...	128 Lbs / 58 kg

Dimensions

Diameter	15 in. / 38cm
Height.....	80 in. / 203.2 cm

Operating

Water Lift	160 in. / 406.4 cm
Air Flow (Cubic Feet/Minute)	111 CFM
Air Watts.....	2 x 355
Decibels at 10 feet	68
Motors	2
Voltage.....	120V
Amps.....	18
NEMA Plug	5-20P
Capacity.....	6 gal / 29 L

INSTALLATION REQUIREMENTS (for contractors)

Electrical (dedicated circuit)

Voltage.....	120V
Amps.....	20
Hz.....	50/60
NEMA/Receptacle.....	5-20R

Water Supply to Vac Unit

Temperature.....	Cold water supply
Pressure	60-100 PSI / 4.1 - 6.9 bars
Connection.....	1/4 MPT with shutoff valve and anti-backflow

Water Supply to Vac Stations and Vac Unit

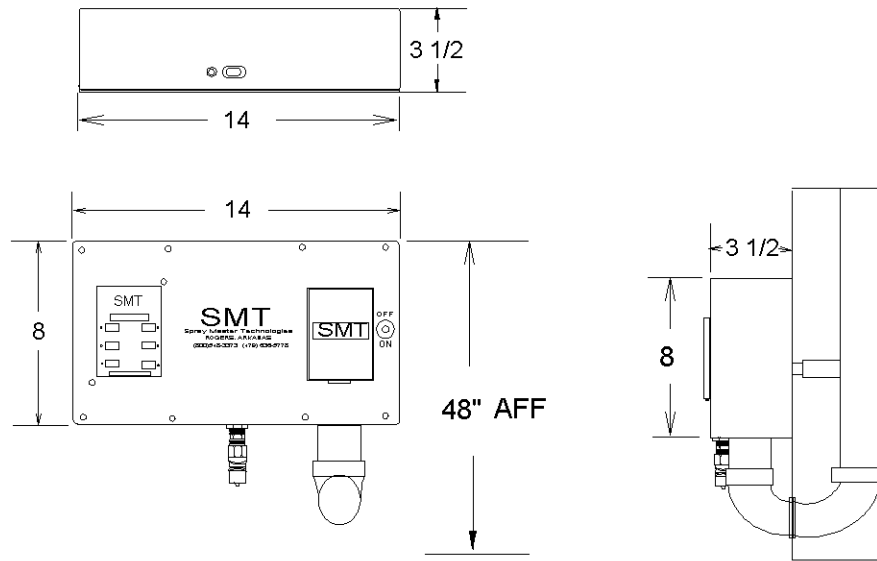
Temperature.....	140-180°F / 60-82°C Recommended (Max: 180°F/82°C)
Pressure	60-100 PSI / 4.1 - 6.9 bars
Connection.....	1/2" MPT with shutoff valve and anti-backflow

Drain for Vacuum Water Discharge

Sanitary Drain	2-3" (3" preferred)
Large Mop Sink	Minimum 10 gallon

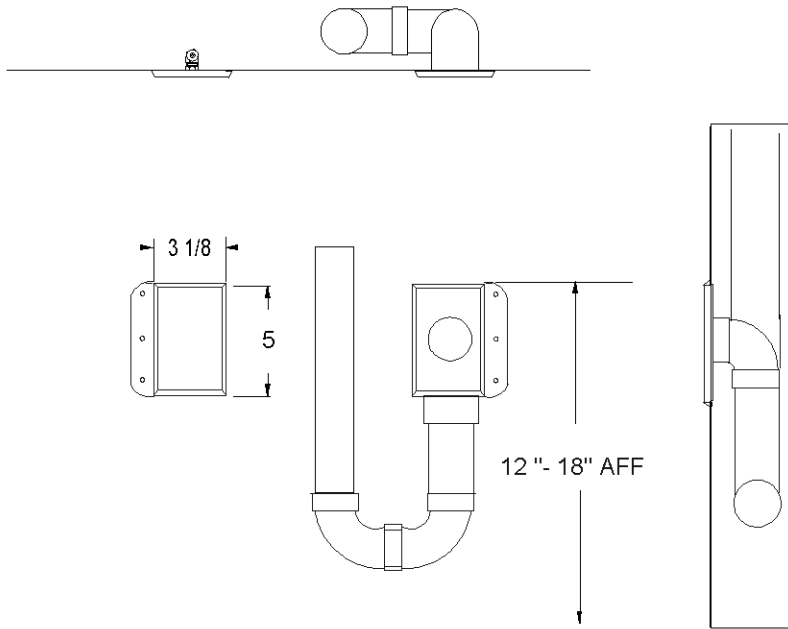
Structural Support (wall mount weight of 128 Lbs)

Backing in wall.....	3/4" plywood
----------------------	--------------



300-7318

VacMaster 1 - High Pressure / High Water Flow



300-7330

VacMaster 2 - Low Pressure / Low Water Flow

SMT - VacMaster® System

