



PRODUCT: \_\_\_\_\_

SKU NUMBER: \_\_\_\_\_

QUANTITY: \_\_\_\_\_



300-1698 Surface Mount

### FEATURES

- Stainless Steel Remote Station
- Shut-off Quick Connect
- Top or Rear Entry
- Stainless Steel Tubing Supply
- Bottom Port
- Non-Locking
- Electronic Controls

SMT - Surface Mount Remote

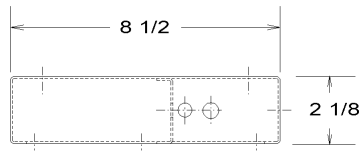


**TOLL FREE: 800-548-3373**

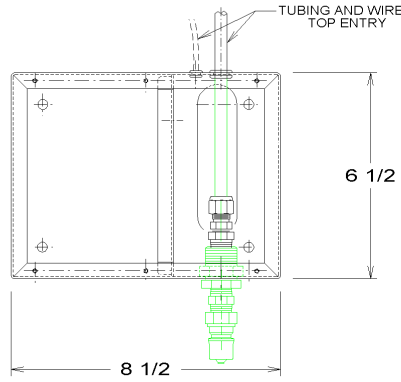
115 E. Linden • Rogers, Arkansas 72756 USA  
(479) 636-5776 • Fax: (479) 636-3245

[www.spraymastertech.com](http://www.spraymastertech.com)

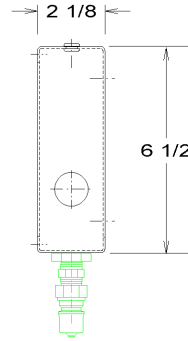
SMT - Surface Mount Remote



PLAN VIEW

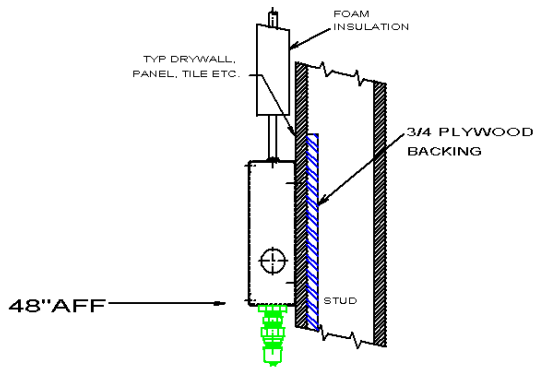


FRONT VIEW

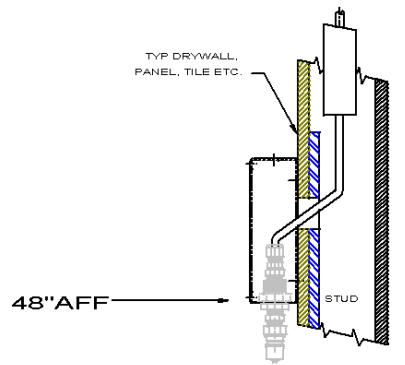


SIDE VIEW

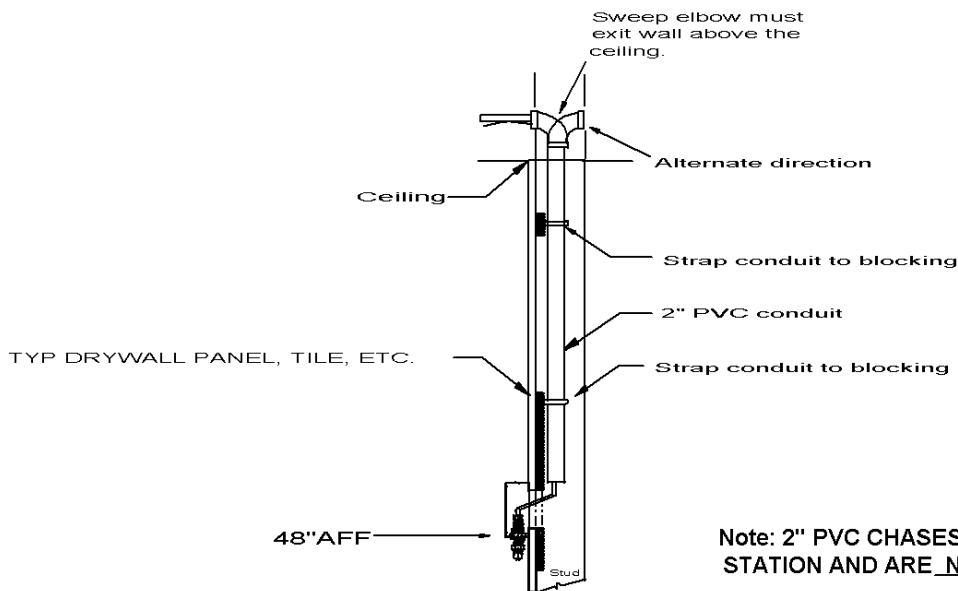
CS- 1698 A



SIDE VIEW  
(Surface Wall- Tubing)



SIDE VIEW  
(IN-WALL TUBING)

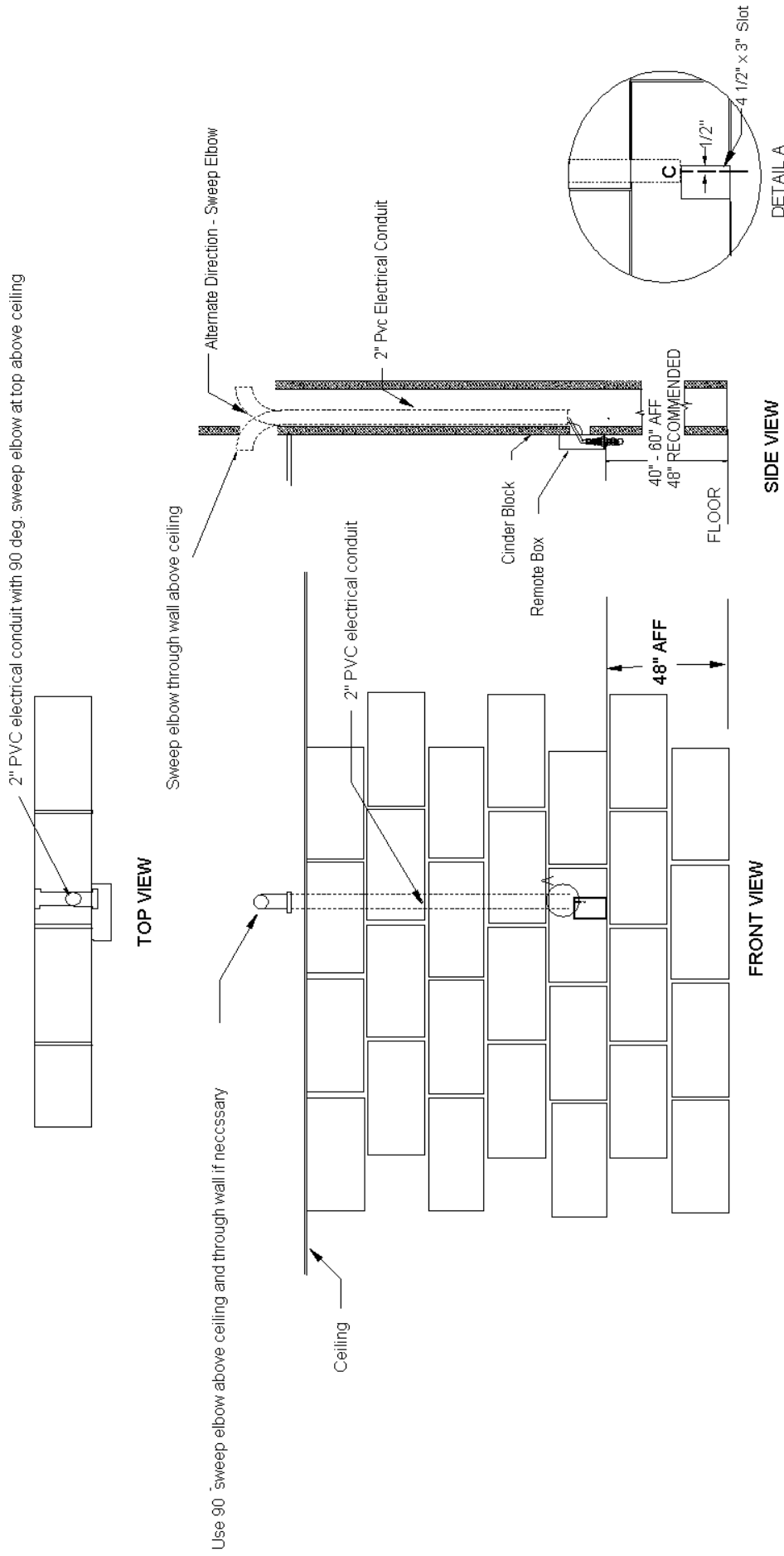


Side View  
(In Wall Tubing)

**Note: 2" PVC CHASES ARE REQUIRED FOR EACH REMOTE STATION AND ARE NOT QUOTED OR SUPPLIED BY SMT**

CS- 1698 B

# SMT - Surface Mount Remote



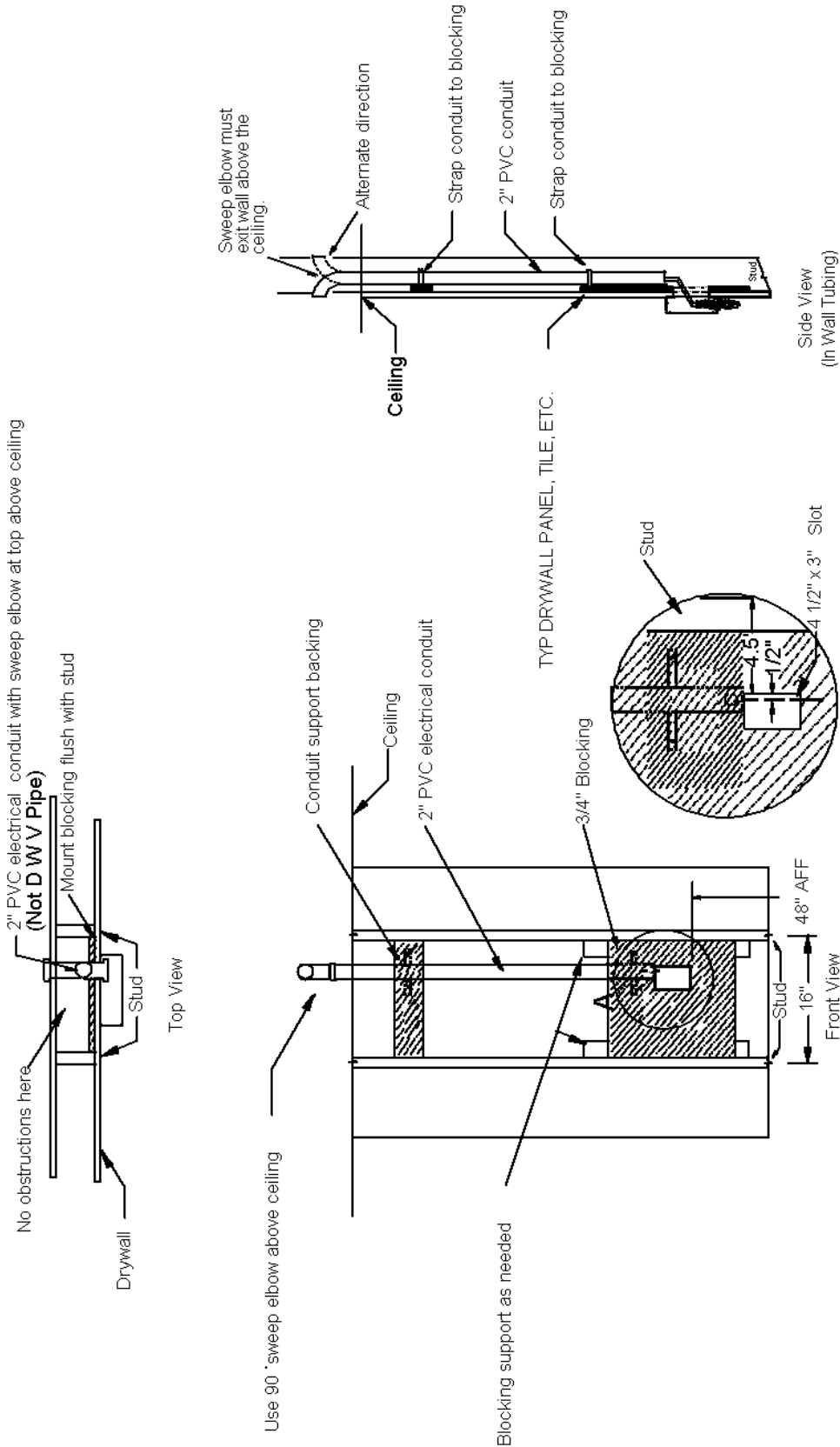
**Note: 2" PVC CHASES ARE REQUIRED FOR EACH REMOTE STATION AND ARE NOT QUOTED OR SUPPLIED BY SMT**

**NOTES:**

- 1.-Cut or block bottom of 4 1/2" x 3" opening 48" above finished floor
- 2.-Ensure there are no obstructions
- 3.-Secure conduit chase in wall centered at 1/2" from right side of 4 1/2" x 3" opening at front inside of Masonry Block
- 4.-Do not cover 4 1/2" x 3" opening.
- 5.-Remote box will mount on surface of finished wall.
- 6.-Call for Technical Support (800) 548-3373
- 7.-Special Provision required for furrow out masonry wall.

**CHASE INSTALLATION  
MASONRY WALL  
SURFACE REMOTE**  
300-2070

# SMT - Surface Mount Remote



- Notes:**
1. Mount the blocking with bottom of 4 1/2" x 3" opening 48" above finished floor.
  2. Ensure there are no obstructions behind opening in the panel.
  3. Make sure the blocking is mounted flush with stud.
  4. Secure blocking firmly to both studs.
  5. Secure conduit chase to back of blocking centered at 1/2" from right side of 4 1/2" x 3" opening.
  6. Do not cover 4 1/2" x 3" opening.
  7. Remote box will mount on surface of finished wall.
  8. Call for Technical Support (800) 548-3373
- Note:** 2" PVC CHASES & BACKING ARE REQUIRED FOR EACH REMOTE STATION AND ARE NOT QUOTED OR SUPPLIED BY SMT

Blocking & Chase Installation  
 Surface Mount Remote  
 ACD-300-2067

